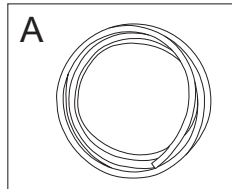


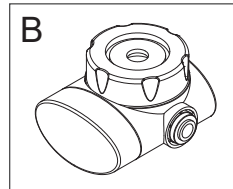
# CPT-T1

## Single-Stage Inverted Filter Cartridge User Manual

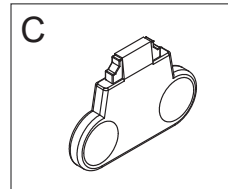
### ■ Included Parts



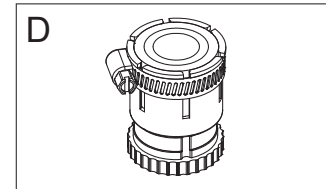
PE Tube  
(1/4" , length: 150CM)



Diverter Valve

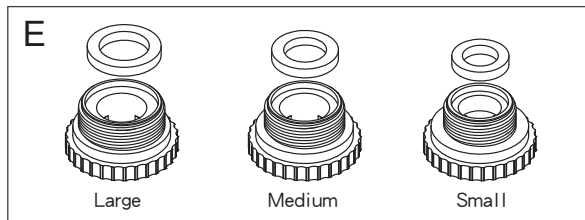


Tightening Key

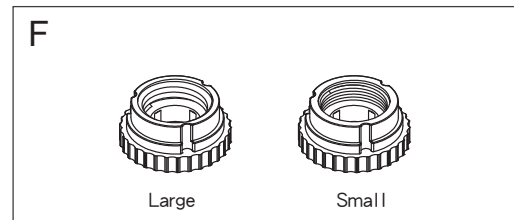


Traditional Faucet Adapter

We include different Faucet Adapter for using with different diameter of faucet outlet.  
You may choose the one meet your demand.



Inner-threaded Faucet Adapter

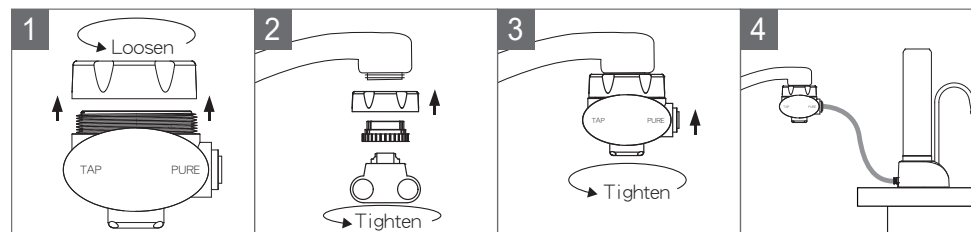


Outer-threaded Faucet Adapter

### ■ Installation Instructions

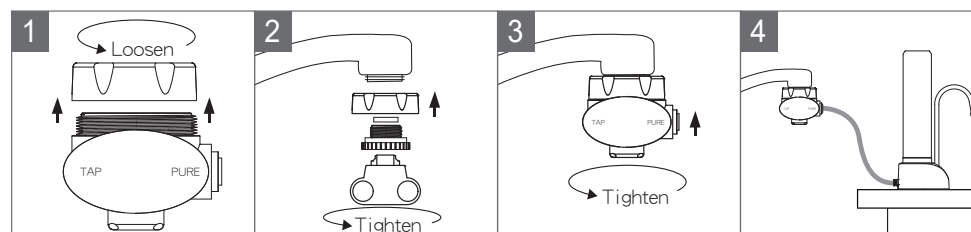
Since different styles of faucets exist, please select the appropriate installation method for your water inlet faucet.

#### (A) Installation for Outer-Threaded Faucets



1. Loosen the top cover of the "Diverter Valve" counterclockwise to remove it.
2. Attach the top cover of the "Diverter Valve" to the "Outer-Threaded Faucet Adapter", and use the "Tightening Key" to screw this assembly onto the faucet.
3. Attach the bottom half of the "Diverter Valve" to the top cover and tighten it.
4. Connect the "Diverter Valve" to the single-stage filter cartridge using the PE tube to complete the installation.

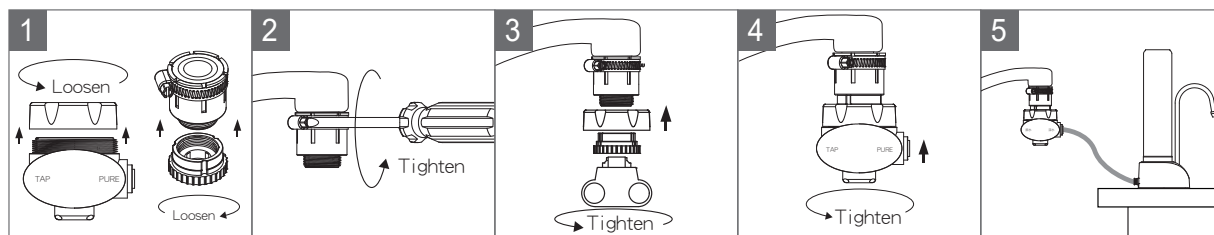
#### (B) Installation for Inner-Threaded Faucets



1. Loosen the top cover of the "Diverter Valve" counterclockwise to remove it.
2. Attach the top cover of the "Diverter Valve" to the "Inner-Threaded Faucet Adapter", and use the "Tightening Key" to screw this assembly onto the faucet outlet.
3. Attach the bottom half of the "Diverter Valve" to the top cover and tighten it.
4. Connect the "Diverter Valve" to the single-stage filter cartridge using the PE tube to complete the installation.

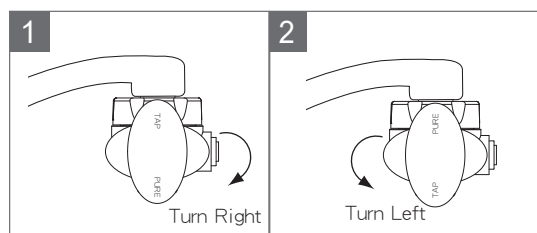
## ■ Installation Instructions

### (C) Installation for Traditional Faucets



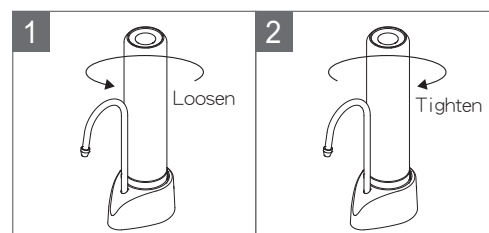
1. Loosen the "Traditional Faucet Adapter" clockwise to unscrew it.
2. Attach the upper part of the "Traditional Faucet Adapter" to the faucet and tighten it with a screwdriver.
3. Connect the top cover of the "Diverter Valve" to the lower part of the "Traditional Faucet Adapter" and attach this assembly onto the upper part of the "Traditional Faucet Adapter" using the "Tightening Key" to tighten them.
4. Secure the lower part of the "Diverter Valve" to the top cover by turning counterclockwise.
5. Connect the "Diverter Valve" to the single-stage filter using the PE tube to complete the installation.

## ■ Faucet Water Flow Switching Instructions



1. Turn the "Diverter Valve" to the right and turn on the faucet to activate filtration. Filtered water will flow from the filtered water spout. Before first use, open the filtered water spout and let the water flow for about 10 minutes (5-10 liters) to clean the filter.
2. Turn the "Diverter Valve" to the left to switch back to regular faucet water flow.

## ■ Filter Replacement Instructions



1. Turn off the water supply and place the filter in the sink to prevent leaks during replacement. Remove the filter by pulling it out in the direction shown in the diagram.
2. Take out the old filter and install the new one by securing it in the direction shown in the diagram. After replacement, open the filtered water spout and let the water flow for about 10 minutes (5-10 liters) to clean the new filter.

## ■ Filter Functions and Recommended Replacement Time

Filter Material	Function	Recommended Replacement Time
Composite Filter (PP + G.A.C.)	PP 5 $\mu$ Filter: Removes larger microorganisms and solid sediments such as rust, sand, and colloidal substances. Granular Activated Carbon: Strongly eliminates bad odors, disinfectant smell, bleach, chemicals, chlorine, pesticides, and carcinogens.	3-6 months

The lifespan of the filter varies depending on the region, water quality, and usage.  
The actual replacement cycle may differ.

## ■ Precautions

- First-time installation: The activated carbon powder inside the filter must be flushed out. Let the initial water discharge from the filter flow for 10 minutes before use.
- Stability: Place the product on a stable surface to prevent it from falling and causing injury.
- Fire Safety: Keep the product away from flammable materials to prevent fire hazards.
- Cleaning: Use a cloth to wipe the product. Do not use petroleum products for cleaning.
- Inlet Water Pipe: The length of the inlet pipe should be less than 5 meters; excessive length may reduce performance.
- Water Quality:
  - \*Total Dissolved Solids (TDS) should not exceed 1000 PPM.
  - \*Water hardness should not exceed 250 PPM.
- Installation Compliance: Follow local regulations when installing the product. Do not use unknown, biologically harmful, or non-disinfected water sources at the inlet or outlet of the product.
- Environmental Conditions:
  - \*Keep the product away from direct sunlight.
  - \*Indoor operating temperature should be between 4°C-40°C.
- Water Pressure: Recommended inlet water pressure is above 20 PSI.
- Hot Water Restriction: Do not use with hot water. The ideal inlet water temperature range is 5°C-40°C.
- If water leaks from the product, cut off the supply valve and call Customer Service.
- When the filter is not in use for a long period of time, run water through the filter for two minutes before use.
- After activated carbon filter replacement, a certain amount of carbon fines may be introduced to the water. It is food grade activated carbon particles and is harmless to the body.