



CHA

USER MANUAL

TABLE OF CONTENTS

1. INTRODUCTION	1
2. WHAT IS REVERSE OSMOSIS (RO)	2
3. SAFETY INFORMATION	3-5
4. PRODUCT SPECIFICATION	6
5. PROFILE.....	6
6. ACCESSORIES AND OPTIONS	7
7. SYSTEM DIAGRAM	8
8. HOW QUICK CONNECTORS WORK	9
9.INSTRUCTION FOR OUTER CASING DISASSEMBLING.....	9
10. INSTALLATION DIAGRAM	10
11. INSTALLATION	11-14
- A. FAUCET ASSEMBLY	
- B. STORAGE TANK ASSEMBLY	
- C. DRAIN CLAMP ASSEMBLY	
- D. FEED WATER ASSEMBLY	
- E. POWER	
12. 3 IN 1 FILTER CHANGE AND INSTALLATION.....	15-16
13. RO MEMBRANE REPLACEMENT.....	16-17
14. POST FILTER REPLACEMENT	18
15. DESCRIPTION FOR FILTERS	19
16. TROUBLESHOOTING	20-22



■ INTRODUCTION

We sincerely thank you for purchasing PURICOM CHA Five Stage RO Water Purifier. To ensure your safety and satisfaction, please read through this manual before use.

As the environment continues to deteriorate, it is increasingly difficult to obtain a reliable source of clean, pure, healthy drinking water. That is why PURICOM, chooses to use RO membranes with the highest quality and other relevant technologies to develop a series of versatile and economical RO water purifiers, and thus able to provide pure and healthy water.

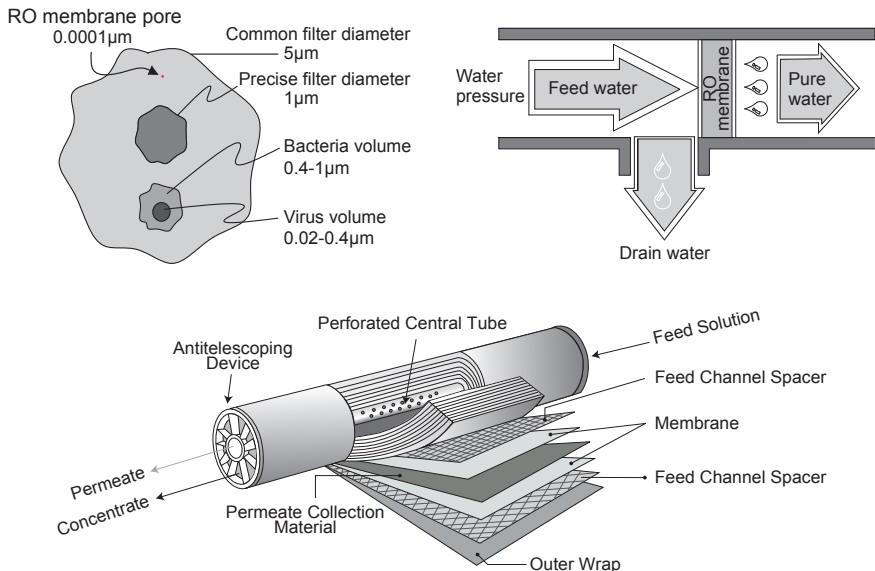
You will find the PURICOM CHA Five Stage RO Water Purifier very easy to maintain, with its quick, simple, sanitary filter replacements. The fresh tasty water is also perfect for beverages such as coffee, tea and lemonade.

Please read this manual carefully, paying attention especially to maintenance procedures and safety information. With all gratitude, we assure you a constant, sustainable supply of pure healthy water.

■ WHAT IS REVERSE OSMOSIS (RO)

To fully understand the technology of Reverse Osmosis, it is a must to understand normal osmosis. Osmosis is a natural process that occurs in all living things. For instance, osmosis permits water and nutrient absorption through the root system of plants; similarly, nutrition is assimilated from blood to cells in the human body. The drawings below help further explain the principle of reverse osmosis.

As water exerts pressure on the semi-permeable membrane, the purified (or filtered) water passes through the pores of the membrane, while the rejected (or concentrated) is diverted to the drain. When the diameter of the pores is less than 0.0001 microns, only pure water and a balanced quantity of minerals (sodium, potassium, calcium, and magnesium, etc) can pass through; while other substances (such as bacteria, viruses, metals, pesticides, chemical products, etc) are eliminated during the process.



■ SAFETY INFORMATION

Please read this information to prevent property loss and to ensure your safety.



ELECTRICITY SAFETY

1. Be sure the local voltage accords with the system voltage. Electrical shock or fire may occur as a result.
2. Do not use a damaged power cord or plug, or loose outlet.
3. Do not pull the cord to unplug or handle the plug with wet hands.
4. Do not bundle the power cord tightly, it may cause damage.
5. If the cord or plug is wet, unplug the unit and let it dry completely before subsequent use.
6. Unplug the unit before repair, inspection, or replacement.
7. Do not plug into an outlet or power strip that is being used by several other appliances. Use a separate outlet for the unit.
8. Shut the main water supply valve and unplug the power cord when not using for a long time.
9. Do not attempt to repair the power cord.
10. Do not repeatedly plug and unplug the unit from the electrical outlet.
11. Do not move the product by pulling the electrical cord.



INSTALLATION SAFETY

- 1.Keep the product away from inflammable gas or burnable materials.
- 2.Do not install the unit near heaters.
- 3.Do not spray with water. Use a damp cloth to clean.
- 4.The length of the water inlet hose must be shorter than 5 m. If longer;product performance may be degraded.
- 5.Do not use with hot water. Optimal inlet water temperature is 5°C- 45°C.
- 6.Inlet water pressure is 15-45 PSI.
- 7.Max. working pressure is 100 PSI.
- 8.Water analysis TDS should not exceed 1000 PPM . Hardness should not exceed 250 PPM.
- 9.Ensure the inlet, outlet and drain connections are correct and that the drain point is not blocked.
- 10.The filtration system installation shall comply with state and local laws and regulations. Do not use with water that is microbiologically unsafe, of unknown quality, or without adequate disinfection before or after the system.



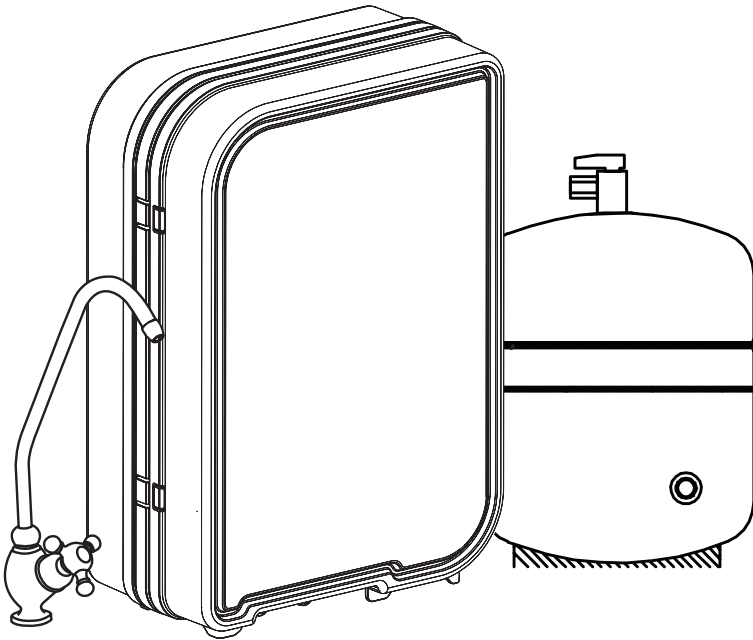
OPERATION SAFETY

- 1.If water leaks from the product, cut off the supply valve, unplug, and call Customer Service.
- 2.Unplug immediately and call the Customer Service if the unit makes a strange noise or odd smell.
- 3.Use or place the unit on an even surface and do not apply force to the unit.
- 4.When water is stored or the product is not in use for a long time, drain all water from the storage tank before use.
- 5.Periodical filter replacement is prerequisite for clean water. If filters are overused, the performance of filters is degraded.
- 6.Use with Puricom filter products to maintain expected product lifespan and performance.
- 7.After activated carbon filter replacement, a certain amount of carbon fines may be introduced to the water. It is food grade activated carbon particles and is harmless to the body.
- 8.Before using the filter for the first time or after replacement of the carbon filter run water for a few minutes, till the water runs clear, to rinse any carbon fines from the filter.
- 9.Do not expose the unit to direct sunlight or high humidity environment. The optimal room temperature for the unit is 4°C-40°C.

■ PRODUCT SPECIFICATION

Model	CHA (with pump)
Voltage	100~240VAC/50~60Hz
Production Rate	50 / 75 / 100 GPD
Size	W44cm x H15cm x D27cm

■ PROFILE



■ ACCESSORIES AND OPTIONS

● Accessories pack

A. PE tubes (white) B. Feed water ball valve C. Feed water connector

D. Faucet E. Wall plug electronic transformer F. Drain clamp

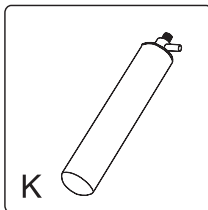
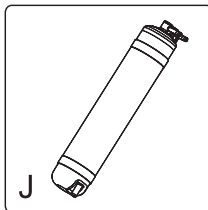
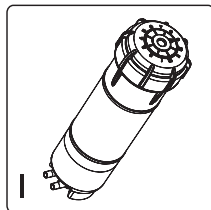
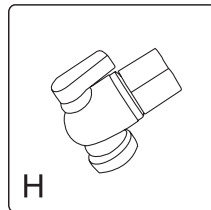
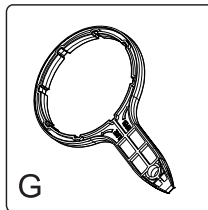
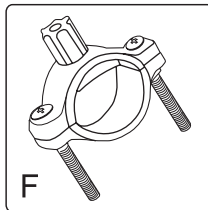
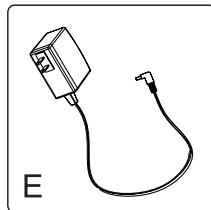
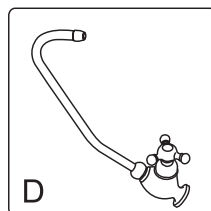
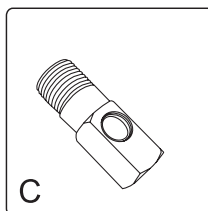
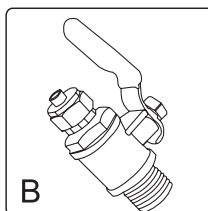
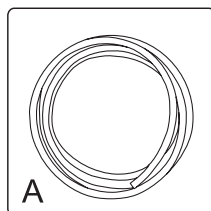
G. Housing wrench H. Ball valve

● Filters

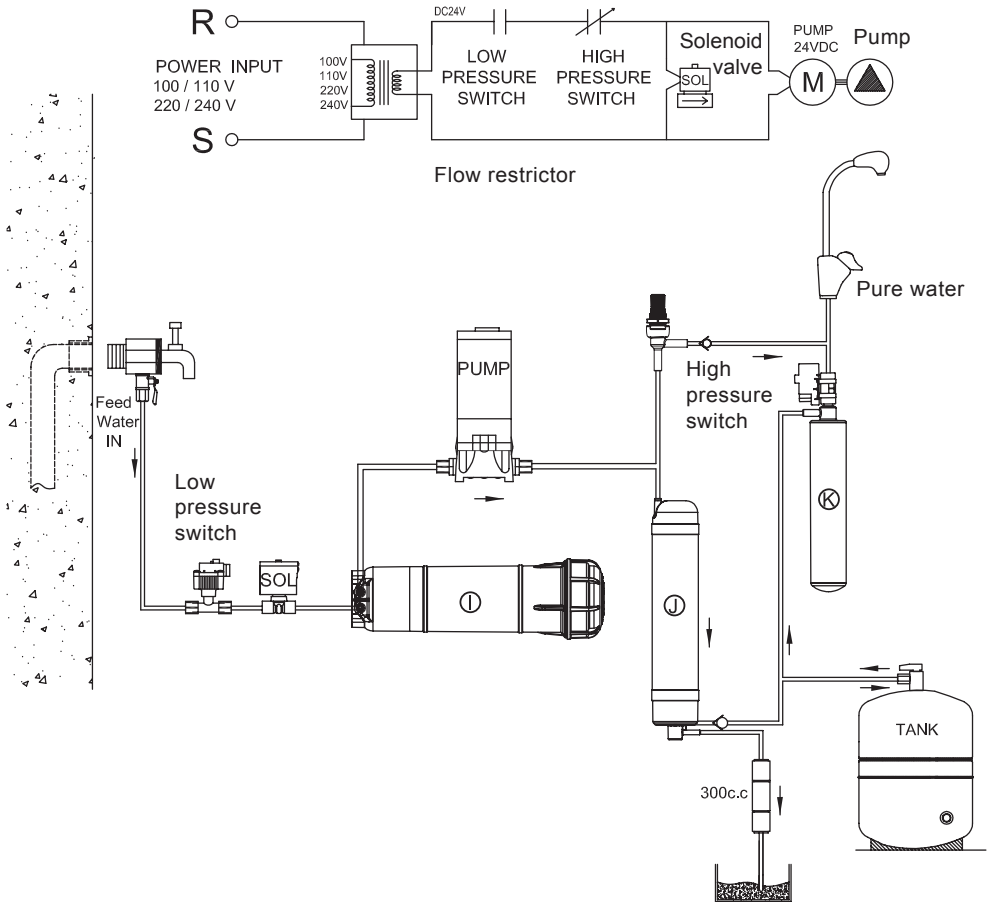
I. 3 in 1 filter

J. Disposable RO membrane

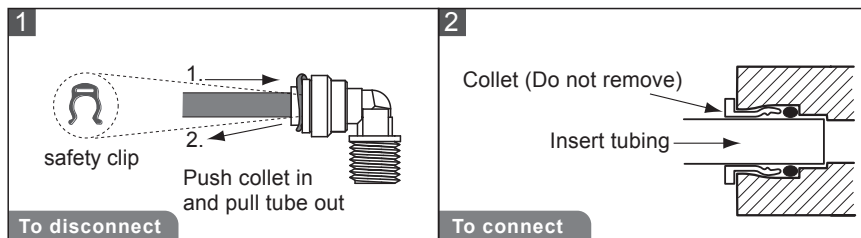
K. Post carbon



■ SYSTEM DIAGRAM

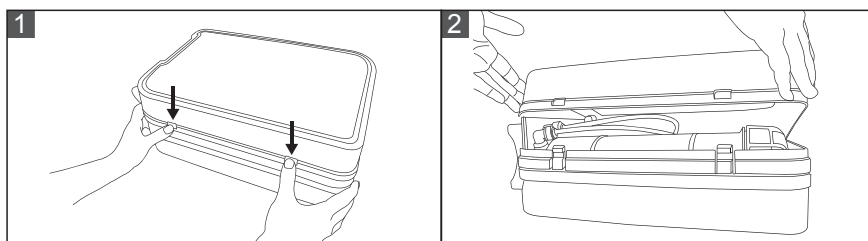


■ HOW QUICK CONNECTORS WORK



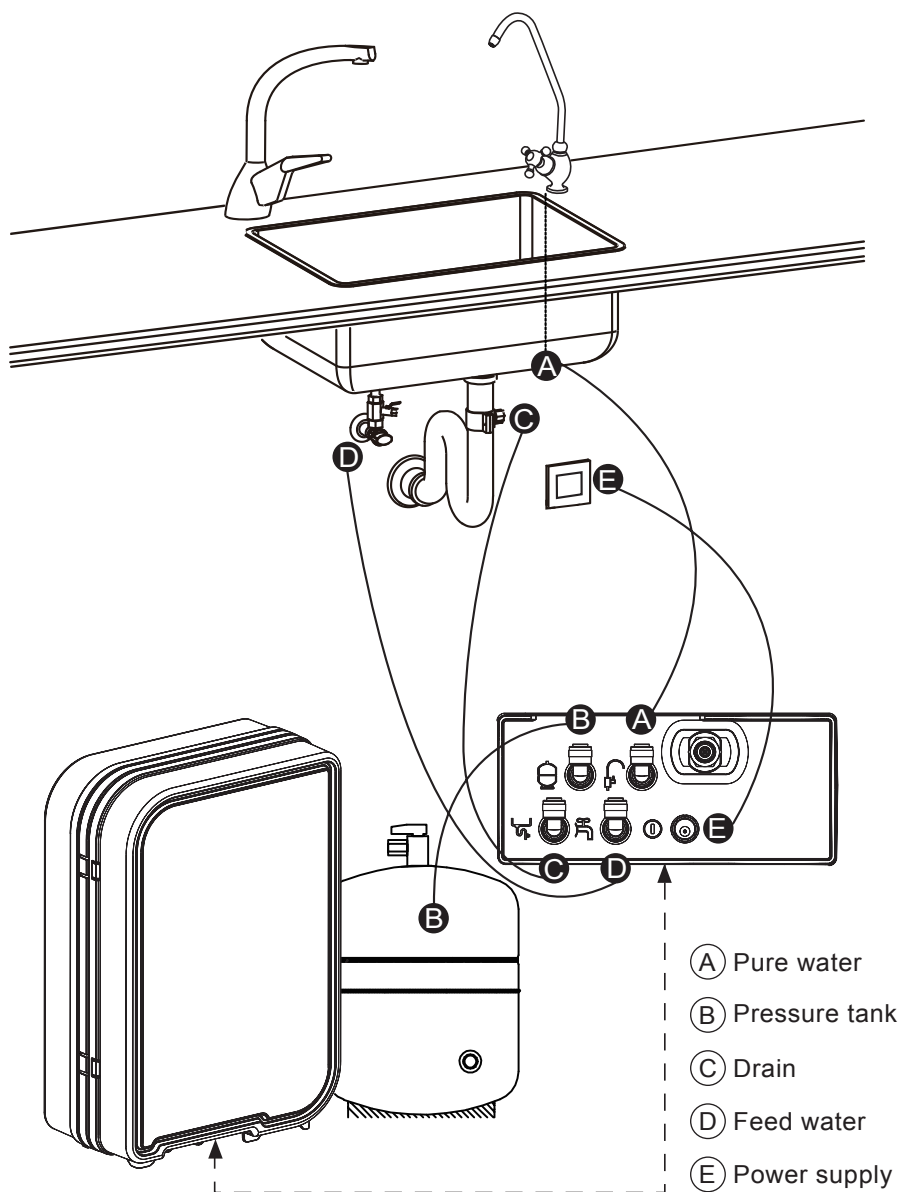
1. To remove tubing from the connector: Remove the safety clip from under the collet, push in the collet, and pull the tube out. (fig. 1)
2. Installation. Ensure the tube is clean and free of burrs. Push the tube into the connector until it stops. (fig. 2)
3. Pull tube out a little bit, and replace the safety clip.

■ INSTRUCTION FOR OUTER CASING DISASSEMBLING



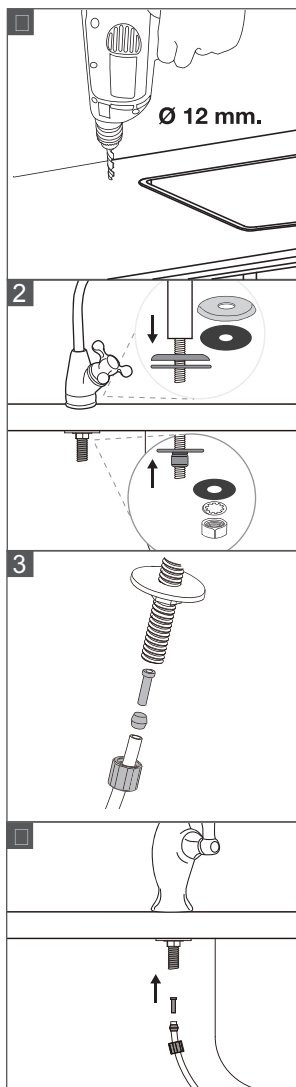
1. Press the tenon with thumb. Push up the casing and do the same for the other side.
2. The upper cover can be removed this way.

■ INSTALLATION DIAGRAM



■ INSTALLATION

A. FAUCET ASSEMBLY



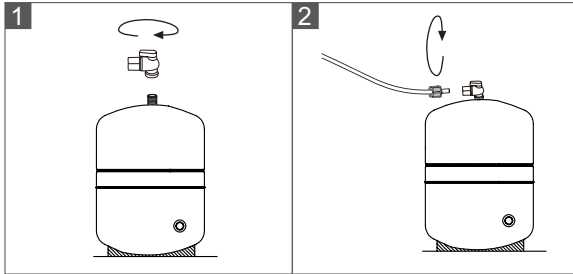
1. Drill a 12mm hole on the right or left hand side of the sink.

2. Install the new faucet in the sink hole, and from below the sink, assemble the mounting hardware.

3. Slide the nut from the bottom of the faucet onto the end of the tube. Then place the seal on the end of the tube and slide down to about 2 centimeters from the end of the tube. Place the spacer into the end of the tube.

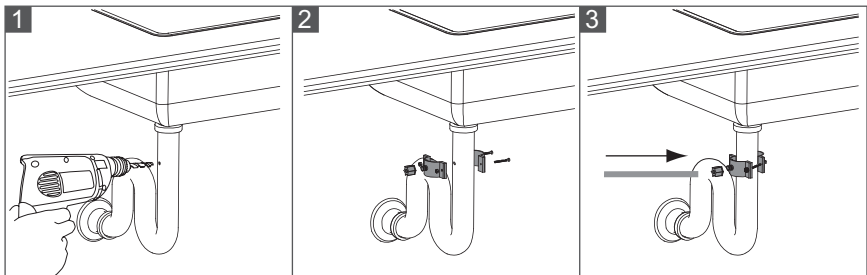
4. Put the end of the tube into the bottom of the faucet and tighten the nut to complete the faucet assembly. Refer to page 10. **A**

B. STORAGE TANK ASSEMBLY



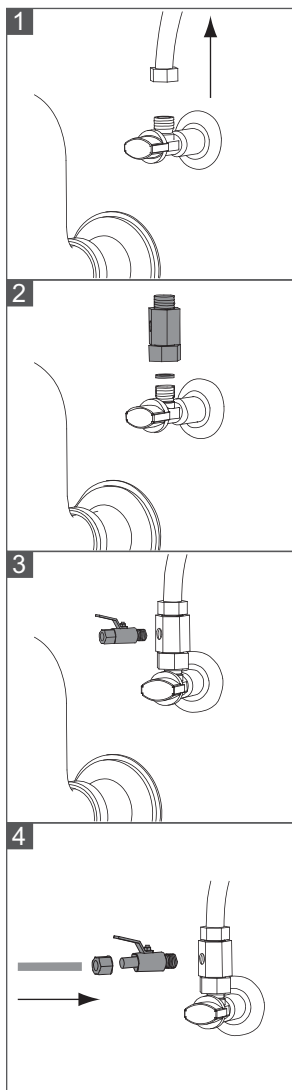
1. Take out the storage tank and the ball valve. Wind 6 wraps of sealing tape on the storage tank screw thread, then screw on the ball valve.
2. Refer to p.10 **B**. Connect the PE tube and complete the storage tank assembly.

C. DRAIN CLAMP ASSEMBLY



1. Drill a 6mm hole on the existing drain pipe.
2. Tighten the drain clamp evenly on both sides.
3. Refer to p.10 **C**. Connect the PE tube and complete the drain clamp assembly.

D. FEED WATER ASSEMBLY



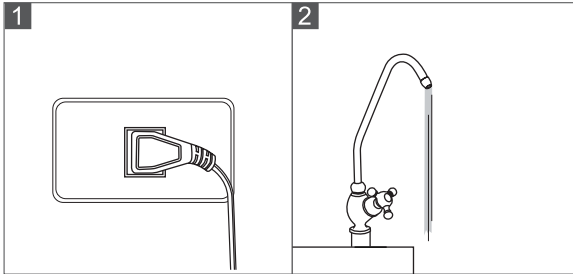
1. Turn off the feed water supply, and disconnect the existing cold water line from the existing cold water supply valve.

2. Wrap several turns of seal tape on the new feed water connector and install it with the black washer on the existing cold water supply valve.

3. Reinstall the existing cold water line on the new feed water connector. Wrap several turns of seal tape on the ball valve and install it on the new feed water connector.

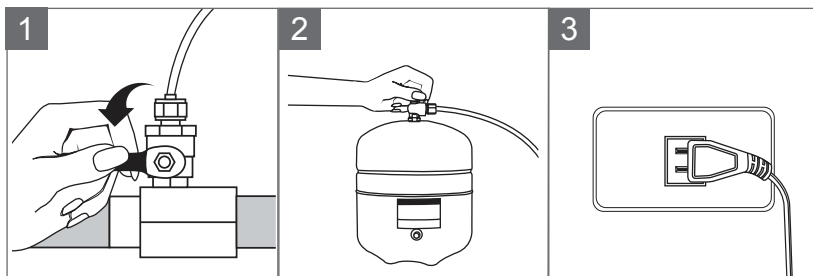
4. Refer to p.10 **D**. Connect the PE tube and complete the feed water assembly.

E. POWER

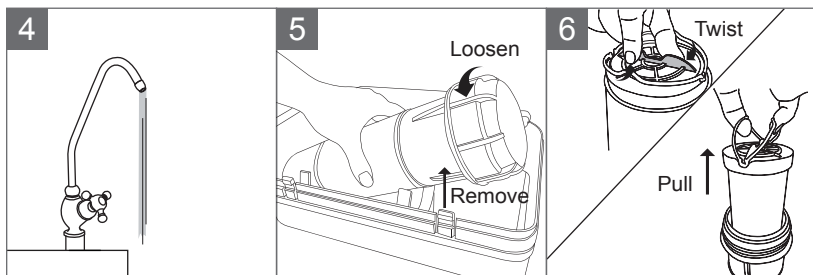


1. Make sure all connections and filters are properly installed.
Plug in power. See p.10 **E**.
2. Allow a tank of water to rinse through system before first time use.

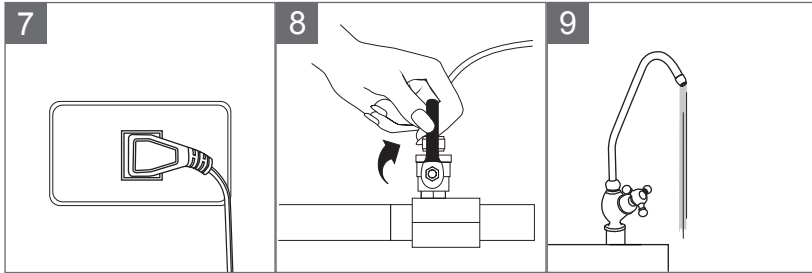
■ 3 IN 1 FILTER CHANGE AND INSTALLATION



1. Turn off the water supply.
2. Turn off the pressure tank ball valve.
3. Unplug the power.



4. Open the faucet to release the pressure from the tube.
5. Remove the 3 in 1 filter from the clips and loosen the housing cap as indicated by the arrow .
6. Twist the filter in the direction indicated by the arrow and pull up on the handle. Remove the filter and replace with a new one.

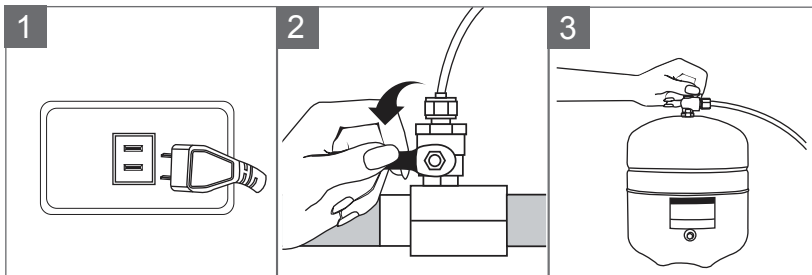


7. Plug on the power cord.

8. Turn on the water supply and the pressure tank ball valve.

9. After replacing, let about one gallon of water flow through the filter to rinse the filter before using.

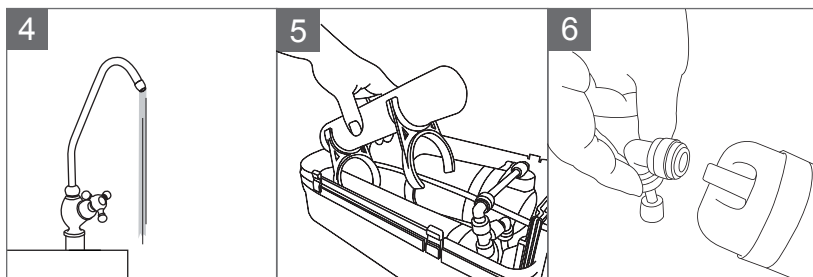
■ RO MEMBRANE REPLACEMENT



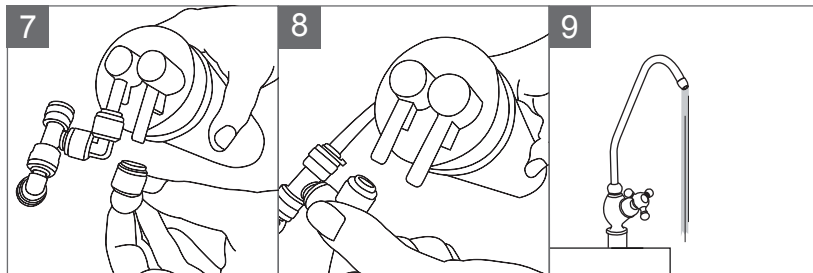
1. Unplug the power.

2. Turn off the water supply.

3. Turn off the pressure tank.



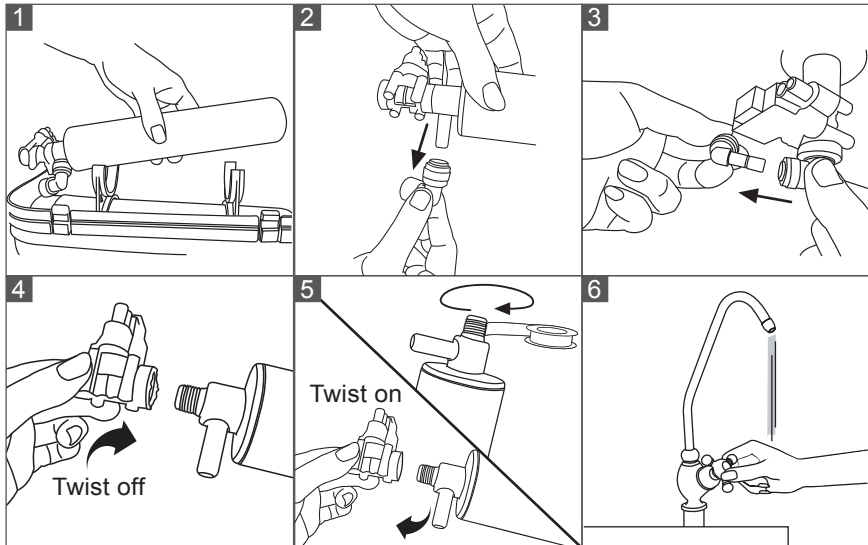
4. Open the faucet to release the pressure from tube.
5. Take off the post carbon and remove the RO membrane.
6. Remove the connector from inlet.



7. Remove the connector from drain outlet.
8. Remove the connector from pure water outlet.
9. After replacing, plug on the power cord. Turn on the water supply and the pressure tank ball valve. Let about one gallon of water flow through the filter to rinse the filter before using.

■ POST FILTER REPLACEMENT

Before replacing the post filter, see page 15 (filter change section) and complete steps 1~4.



1. Remove the post filter from the clip.
2. Remove the feed water connector according to the direction indicated by the arrow.
3. Remove the outlet connector from the high pressure switch.
4. Twist off the high pressure switch as indicated by the arrow.
5. Wind sealing tape on connector (6 turns) and twist on the high pressure switch as indicated by the arrow. Connect the tubes to each side of the pressure switch and place the filter back onto the clips.
6. After replacing, plug on the power cord. Turn on the water supply and the pressure tank ball valve. Let about one gallon of water flow through the filter to rinse the filter before using.

■ DESCRIPTION FOR FILTERS

FILTER	REPLACEMENT INTERVAL	FUNCTION
3 in 1 filter	3~6 months	<p>New multifunctional 3 in 1 filter. Double-pass carbon filter channel gives maximum filtering efficiency.</p> <p>1.PP removes sand, silt, dirt and rust particles.</p> <p>2.GAC removes chlorine, chemical pollutants, odor and color.</p>
R.O. membrane (0.0001μ)	1 year and above	<p>This high technology, semi permeable membrane effectively takes out TDS, viruses, bacteria, slime, heavy metal, pesticides, and chemicals etc. Harmful impurities separated by the RO membrane are diverted to the drain.</p>
Post Carbon Filter	6-12 month	<p>Drinking water enters this filter after the storage tank. It is used as the final polishing filter before use.</p>
<p>Note:</p> <p>Frequent use or bad quality feed water shortens filter lifespan. If water pressure and water quality are not within limits, please contact your distributor to make proper modifications.</p>		

■ TROUBLESHOOTING

Problem	Possible Cause	Troubleshooting
Pump not working.	1. No power supply.	1. Check the power supply.
	2. Transformer is burnt out.	2. Replace transformer. (A possible reason is a pump leak causing the bearing to jam, so the transformer burns out. The pump and the transformer should be checked at the same time.)
	3. Pump bearing jammed.	3. Replace pump.
	4. Bad wire connection.	4. Check wire connection.
	5. Bad electrical connection inside pump.	5. Replace pump.
	6. High / low pressure switch is damaged	6. Replace high/ low pressure switch.
Pump switches on and off repeatedly.	1. Low pressure switch switches on and off repeatedly because of low feed water pressure.	1. Increase feed water pressure. (If you are sure of a consistent feed water pressure, a short circuit around the low pressure switch could be made.)
	2. Bad electrical connection inside pump.	2. Replace pump.
	3. Bad wire connection.	3. Check all wire connection.
Pump keeps running.	1. Air in the tubes causes the pump to not reach sufficient pressure to shut off the pump.	1. Disconnect the outlet tube of the pump to discharge air and reconnect to run with water in the tube.
	2. The torque of the pump has decreased, so sufficient pressure cannot be reached to turn off the high pressure switch.	2. Replace pump.
	3. High pressure switch is damaged.	3. Replace high pressure switch.
	4. The check valve cannot close properly, thus pressure cannot reach shut off point.	4. Replace check valve.

Problem	Possibility	Troubleshooting
Pump is leaking.	1.Diaphragm seal is worn or split.	1.Replace pump.
	2.Feed water pressure is too high (> 40psi).	2.Install a pressure regulator or shut off pump to allow the system to run at natural feed water pressure.
Pump is noisy.	1.RO membrane or post filter is clogged.	1.Replace RO membrane or post filter.
	2.Pump bearing is worn.	2.Replace pump.
TDS value of permeated water is rising (rejection rate is lower than 90%).	1.Working pressure is lower than 40 psi.	
	(A)Air in the tubes prevents pump from reaching sufficient pressure to permeate properly.	1.(A)Disconnect the outlet tube of the pump to discharge air and reconnect to run with water in the tube.
	(B)RO membrane or post filter is clogged.	1.(B)Replace RO membrane or post filter.
	2.The ratio of permeate water to drain water is less than 1:3.	2.Flow restrictor is clogged. Clean it, or replace it.
	3. RO membrane is worn.	3. Replace RO membrane.
Output of permeate water decreases.	1.R O m e m b r a n e i s clogged.	Replace RO membrane. (If clogging is frequent, increase the drainage ratio of the flow restrictor or install a softener to extend the lifespan of the RO membrane.)
	2.Pump is worn, decreasing the working pressure.	2.Replace pump.
No permeate or drain water is produced.	1.The solenoid valve coil is burnt out.	1.Replace solenoid valve.
	2.Bad electrical connection in solenoid valve.	2.Replace solenoid valve.
	3.Solenoid valve is clogged inside, thus unable to turn on.	3.Replace solenoid valve.
	4.Shut-off valve is worn.	4.Replace shut-off valve.

Problem	Possibility	Troubleshooting
System drains at full tank when pump is not running.	1.Feed water pressure is too high to turn off the shut-off valve.	1.Install a pressure regulator.
	2.The shut-off valve or solenoid valve is clogged.	2.Clean the valve or replace it.
	3.Check valve is worn and causes permeatewater in the storage tank to reverse flow to drain.	3.Replace check valve.
Solenoid valve is noisy.	1.The solenoid valve coil is not in place.	1.Fix the coil in its place.
	2.Feed water pressure is too low, causing the low pressure switch and the solenoid valve to turn on and off repeatedly.	2.Increase feed water pressure.(If you are sure of a consistent feed water pressure, a short circuit around the low pressure switch could be made.)
System does not run.	1.High / low pressure switch is worn.	1.Replace high / low pressure switch.
	2.Feed water pressure is lower than 5 psi.	2.(If you are sure of a consistent feed water pressure, a short circuit around the low pressure switch could be made.)
	3.No power.	3.Check power source.
	4.Pump or transformer is worn.	4.See trouble shooting for pump.
System runs at full tank when faucet is turned off.	1.Check valve is worn and causes permeate water in the storage tank to reverse flow to the drain. The high pressure switch senses pressure decrease and turns on.	1. Replace check valve
	2.High pressure switch is worn.	2.Replace high pressure switch.

CHA



*Member,
Water Quality
Association*

www.puricom.com